

CHAMBER FLOAT TYPE, MAGNETIC LEVEL SWITCH -"CFS"



SINCE 1984

A versatile magnetic level switch with Bistable action for sumps / over head tanks.

Features :

- Bistable switch action
- Single or Double switching capability
- Suitable for Internal, External or Inline installation
- Option of sealed Micro switch

Construction & Operation (Fig. 1 & 2) :

A Dipstick float carrying a magnet coupler at its top end, is housed in a Chamber. It rises & falls with changing liquid level and the corresponding movement of our unique magnetic system, in the seal pipe, makes or breaks contacts, in the enclosure, to provide full proof bistable action.

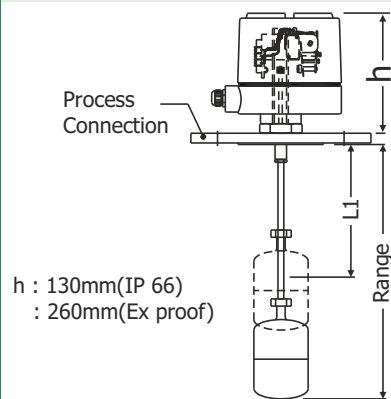
Specifications:

Switch enclosure	: Cast Al, WP IP 66, Ex proof Gr IIA & IIB or IIC
Conduit connection	: Polyamide, PG11 (W proof), ½"NPT (Ex proof)
Dipstick Float	: Ø75mm, SS304, SS316 or PP
Chamber	: CS, CS(A-106), SS304, SS316 or PP
Process Connection	: Flanged / Screwed
Switch Flange	: CS, CS (A-105), SS304, SS316, PP
CCD / Range	: 200 to 400 mm
Set points	: 2Nos (max)
Control range (Dual sw)	: Max 150 mm (approx)
Switch Type / Action	: Microswitch with Bistable action
Switch Contacts	: 5A@250VAC x 2SPDT (DPDT)
Operating Differential (fixed)	: 15 ±5mm
Accuracy	: ±5mm
Max Temperature	: 200°C / 300°C (on demand)
Amb Temperature	: 80°C
Max Test Pressure	: 10 Kg/cm ²
Min Liquid Sp. Gravity	: 0.8
Installation	: Internal, External or Inline
Drain	: ½" NPT Plug

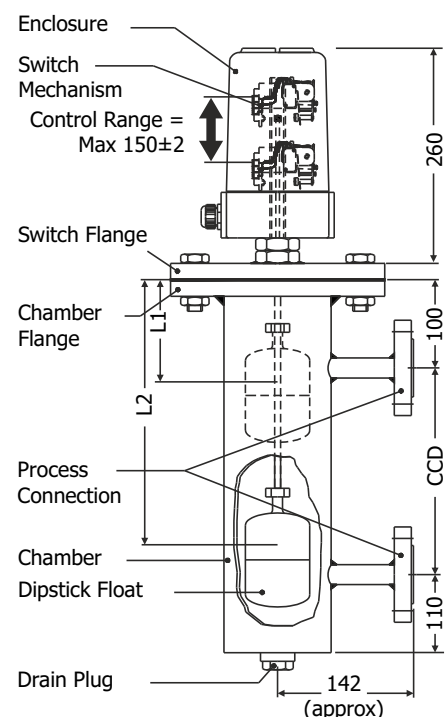


Construction :

Single Set Point w/o Chamber Fig. 1



Dual Set Points with Chamber Fig. 2



Model Identification No. CFS : x CCD/Range

Enclosure

- Cast Al, WP IP 66 _____ J
- Cast Al, Ex-proof IIA & IIB _____ E
- Cast Al, Ex-proof IIC _____ F
- Non-Std _____ O

Dipstick Float MOC

- SS304 _____ N
- SS316 _____ S
- PP _____ P
- Non-Std _____ O

Chamber

- Not provided _____ W
- CS _____ M
- CS (A-106) _____ C
- SS304 _____ N
- SS316 _____ S
- PP _____ P
- Non-std _____ O

No of Preset Levels

- One _____ 1
- Two _____ 2

Installation

- Internal _____ 1
- External (side-side) _____ 2
- Inline (side-bottom) _____ 3
- Non-Std) _____ O

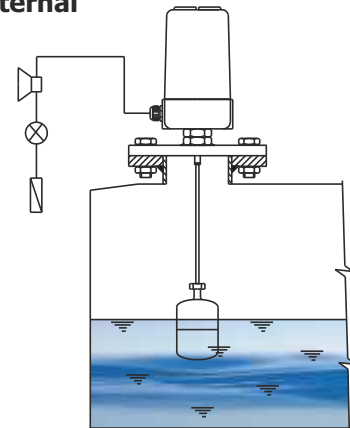
Proc Connection

- 80 NB, BS-10 T 'D' Flange (Internal) _____ T
- 25 NB, BS-10 T 'D' Flange (External / Inline) _____ F
- 1" NPT (F) Screwed (External / Inline) _____ S
- Non-Std _____ O

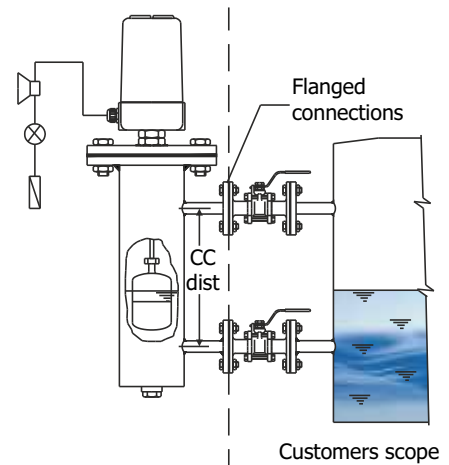
Installation :

Fig. 3

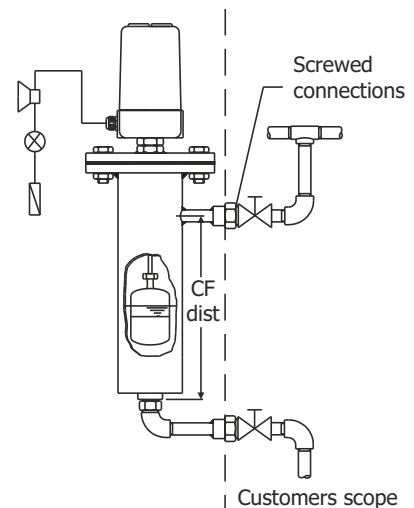
a) Internal



b) External (side-side)



c) Inline (side-bottom)



Ordering Information :

Model x Range (mm) x Liquid & its Sp.Gr.x Optg.Temp x Optg. Pressure, Set Points, CC dist / Range

Applications : Separators, Storage tanks, Drainage systems, Heat exchangers, Boilers, Concentrators scrubbers and compressor cleaning systems.

PUNE TECHTROL PVT LTD

S-18,MIDC, Bhosari, Pune : 411026 India

+91-20-66342900, 27121052

+91-20-66342998

ho@punetechtrol.com

www.punetechtrol.com



R A T E D

NSIC-CRISIL SE-1A

AREA REPRESENTATIVE / DISTRIBUTOR :

All dimensions in mm, except specified.