

Float & Dial Gauge - FDG



SINCE 1984

Reliable & maintenance free gauge, suitable for liquid sumps.

Features :

- Can be installed in areas with limited headroom.
- Can be installed / removed from tanks in service.

Construction & Operation :

It consists of a float, tied to a SS wire rope, other side of which is wound on a drum carrying constant torque spring, to maintain the rope under continuous tension. Due to change in liquid level the float rises or falls and rotates the drum. This motion is transmitted thru gear mechanism to a pointer moving over a calibrated dial to display level in meters, Digital / Analogue output can also be provided for Switching & Transmitting as an option.

Specifications:

Terminal Enclosure	: Cast Al, Pdr coated, WP IP 66 protection
Conduit conn.	: Polyamide, PG9
Dial Enclosure	: Cast Al, Pdr coated WP IP 66 protection
Calibrated Dial (Ø155)	: Al, White pdr coated with black graduations & numericals
Pointer	: Al, red pdr coated
Measuring Ranges	: 0-1, 0-2,, 0-9, 0-10m
Installation	: Top / Side
Process Conn.	: 3"/4" BS-10 T 'D' Flanged
Process Conn. MOC	: SS304 / Ss316
Wire Rope	: Ø1.6 x SS304 / SS316
Float MOC	: SS304 / SS316 / SS304 pvdf coated
Float Dimns	: Ø73 x 240 H
Accuracy	: ±10mm
Min. Sp. Gravity	: 0.8
Temperature Range	: -10 to 100°C
Max. Pressure	: Atm

Adjustable Switch (option) :

Switch Type & Rating	: Micro - SPDT, 5A, 250VAC
Switch Action	: Monostable

Transmitter (option) :

Power Supply	: 15 - 32VDC (2 wire) loop powered
Output	: DC 4-20 mA x 400 load
Accuracy	: 1% of FSD
Conduit Conn	: Polyamide x PG 9

Services :

Raw / Sea water, Oils, Effluent & Solvents.

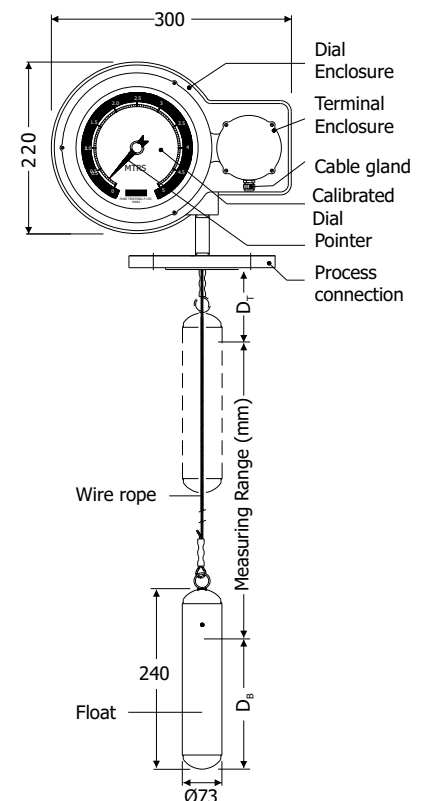
Applications :

Sumps, Floating Roof / Gas Holding Tanks.



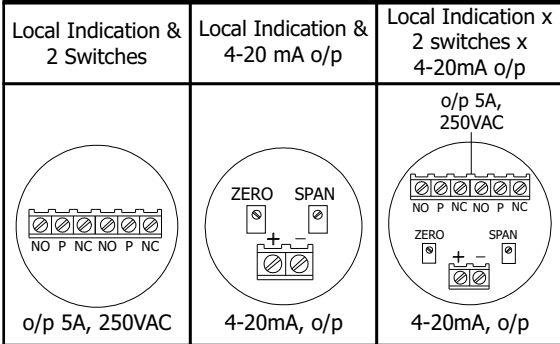
Construction

Fig 1



* D_1 = Top Dead Band = 50
 * D_2 = Bottom Dead Band = 200
 based on water (sp gr=1)

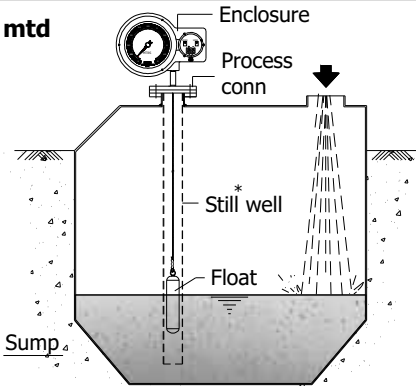
Termination for Various outputs



Installation

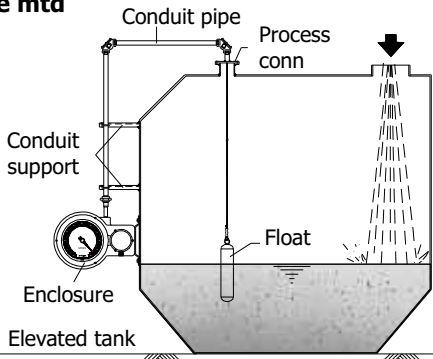
Fig. 2

Top mtd

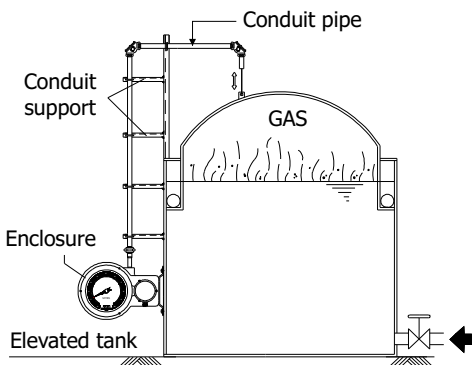


* Still well is essential for turbulent liquids & ranges beyond 5m

Side mtd



Side mtd (floating roof/ gas holding tank)



Model Identification No. FDG :

--	--	--	--	--	--	--	--

Output

- Local Indication Only _____ **1**
- Local Indication & 2 Switches _____ **2**
- Local Indication & 4-20 mA _____ **3**
- Local Indication x 2 Switches x 4-20mA _____ **4**
- Others _____ **0**

Installation

- Top Mounting _____ **T**
- Side Mounting _____ **S**
- Others _____ **O**

Wetted Parts (Float, Flange, Wire Rope)

- SS304 _____ **N**
- SS316 _____ **S**
- Others _____ **O**

Process Connection Size

- 3" NB, BS-10 T 'D' Flange _____ **1**
- 4" NB, BS-10 T 'D' Flange _____ **2**
- Others _____ **0**

Measuring Range

- 0 - 1 mtrs _____ **1**
- 0 - 2 mtrs _____ **2**
- 0 - 3 mtrs _____ **3**
- 0 - 4 mtrs _____ **4**
- 0 - 5 mtrs _____ **5**
- 0 - 6 mtrs _____ **6**
- 0 - 7 mtrs _____ **7**
- 0 - 8 mtrs _____ **8**
- 0 - 9 mtrs _____ **9**
- 0 - 10 mtrs _____ **10**

Accessories

- Without _____ **W**
- CS Still Well _____ **1**
- SS304 Still Well _____ **2**
- SS316 Still Well _____ **3**
- PP Still Well _____ **4**
- Others _____ **0**

Level Indicator Controller

- Not Provided _____ **W**
- Techtrol Level Indicator Controller (TLIC) _____ **1**
- Techtrol Loop Powered Indicator (TLPI) _____ **2**
- Techtrol Universal Indicator Controller (TUIC) _____ **3**

Ordering Information : Specify Model No., Liquid, Liquid Sp. Gr., Op Temp & Press, Tank Height, Nozzle Height, Min / Max set points

All dimensions in mm, except specified.

PUNE TECHTROL PVT LTD

S-18, MIDC, Bhosari, Pune : 411026 India

+91-20-66342900, 27121052

66342998

ho@punetechtrol.com

www.punetechtrol.com



R A T E D

NSIC-CRISIL SE-1A

AREA REPRESENTATIVE / DISTRIBUTOR :